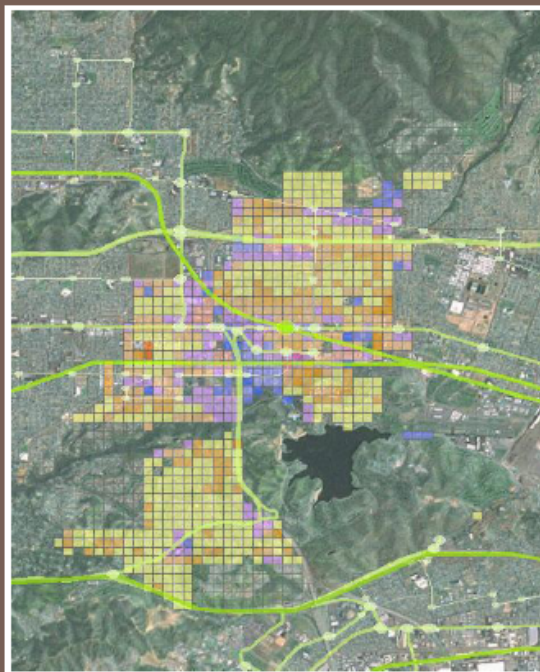


# 6. Approach & Methodology for Gateway SCS SCAG Sustainability Tool Used for Land Use Analysis

## STEP3 MONITOR INDICATORS ON-THE-FLY

Compare the Scenarios and Monitor the Impact of Land Use Decisions in Real Time



### Detailed tables

Scenario	Total Floor Area	Total Employment	Total Population	Total Housing Units	Total Jobs per Household	Total Population per Household	Total Jobs per Household	Total Population per Household
Scenario 1	1,234,567	123,456	123,456	123,456	1.0	1.0	1.0	1.0
Scenario 2	1,345,678	134,567	134,567	134,567	1.1	1.1	1.1	1.1
Scenario 3	1,456,789	145,678	145,678	145,678	1.2	1.2	1.2	1.2
Scenario 4	1,567,890	156,789	156,789	156,789	1.3	1.3	1.3	1.3
Scenario 5	1,678,901	167,890	167,890	167,890	1.4	1.4	1.4	1.4

### Quick reference graphs

#### Housing Mix

#### Jobs Mix

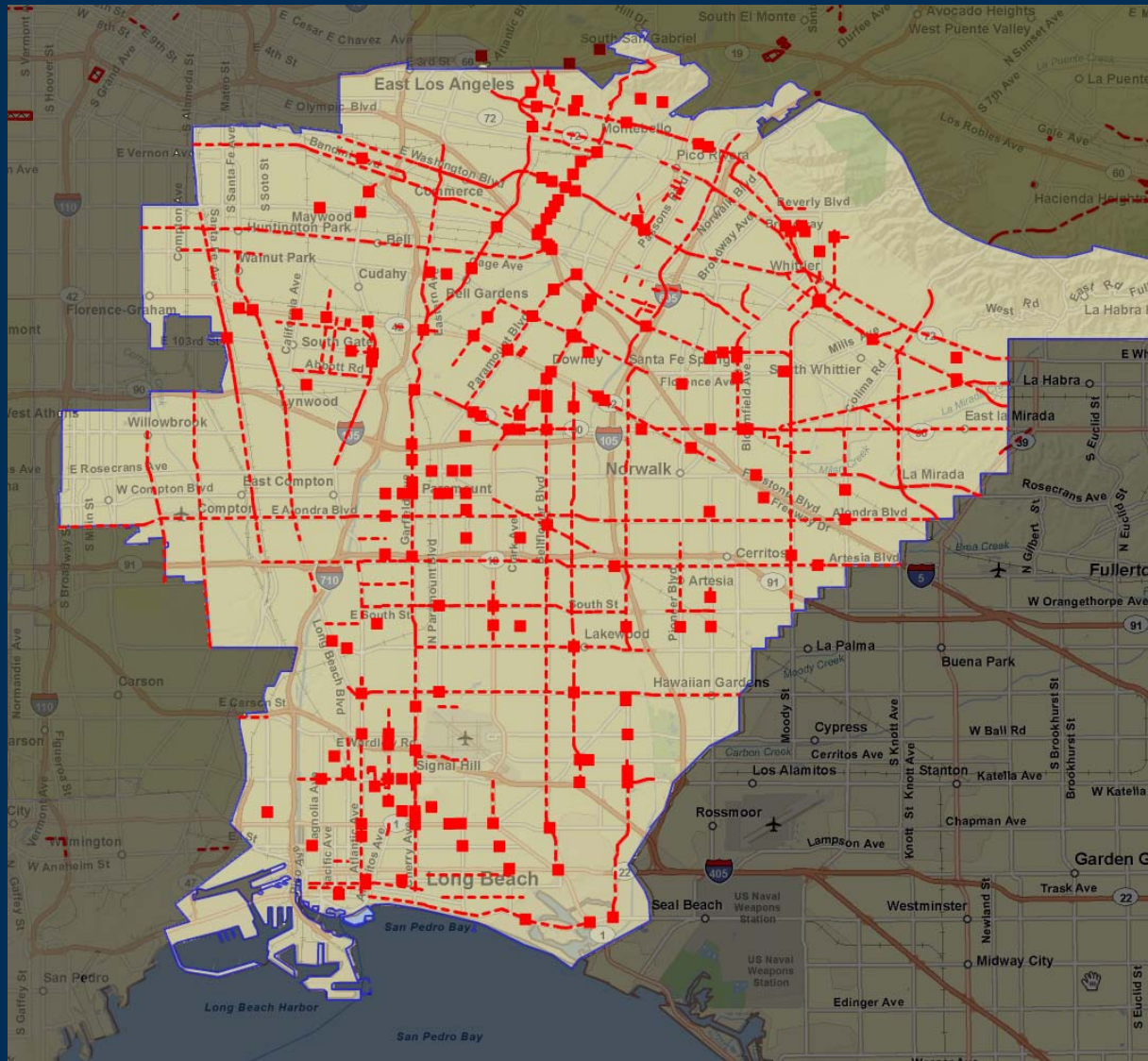
#### Employment Mix

#### Jobs Housing Balance

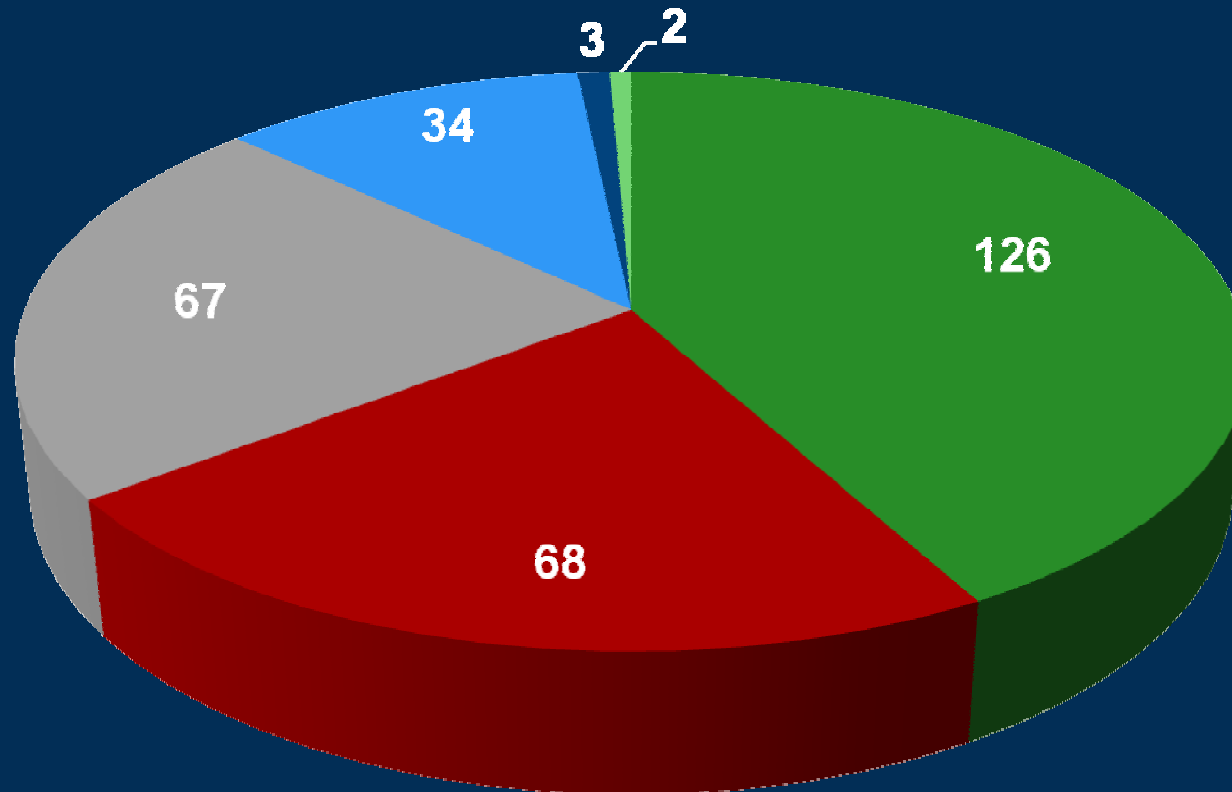
### Summary tables

	Scenario 1	Scenario 2	Scenario 3	Scenario 4	Scenario 5
Developed Acres	4,891.05	4,891.05	4,891.05	4,891.05	4,891.05
Housing Mix					
Single Family	3,147.35	3,147.35	3,147.35	3,147.35	3,147.35
Low Density	0.00	0.00	0.00	0.00	0.00
Medium Density	3,340.65	3,340.65	3,340.65	3,340.65	3,340.65
Medium Density	0.00	0.00	0.00	0.00	0.00
Employment Mix					
Retail	2,316.93	2,316.93	2,316.93	2,316.93	2,316.93
Office	16,431.52	16,431.52	16,431.52	16,431.52	16,431.52
Industrial	3,913.07	3,913.07	3,913.07	3,913.07	3,913.07
Total	17,668.00	17,668.00	17,668.00	17,668.00	17,668.00
Density					
Developed Land	4.23	4.23	4.23	4.23	4.23
Employment	4.23	4.23	4.23	4.23	4.23
Job/Housing Balance	0.52	0.52	0.52	0.52	0.52
Vehicle Ownership per Household	2.01	2.01	2.01	2.01	2.01
Vehicle Miles Traveled per Household	43.95	43.95	43.95	43.95	43.95
Travel Mode Split					
One-Away Trip	99.7%	99.7%	99.7%	99.7%	99.7%
Auto Passenger Trip	99.9%	99.9%	99.9%	99.9%	99.9%
Taxi Trip	0.2%	0.2%	0.2%	0.2%	0.2%
Bike Trip	0.1%	0.1%	0.1%	0.1%	0.1%
Walk Trip	0.1%	0.1%	0.1%	0.1%	0.1%
Greenhouse Gas Emissions (Base/yr)	410.04	410.04	410.04	410.04	410.04
Greenhouse Gas Emissions (per Household)	0.021	0.021	0.021	0.021	0.021

# 7. Results Developed to Date Submitted Transportation Projects



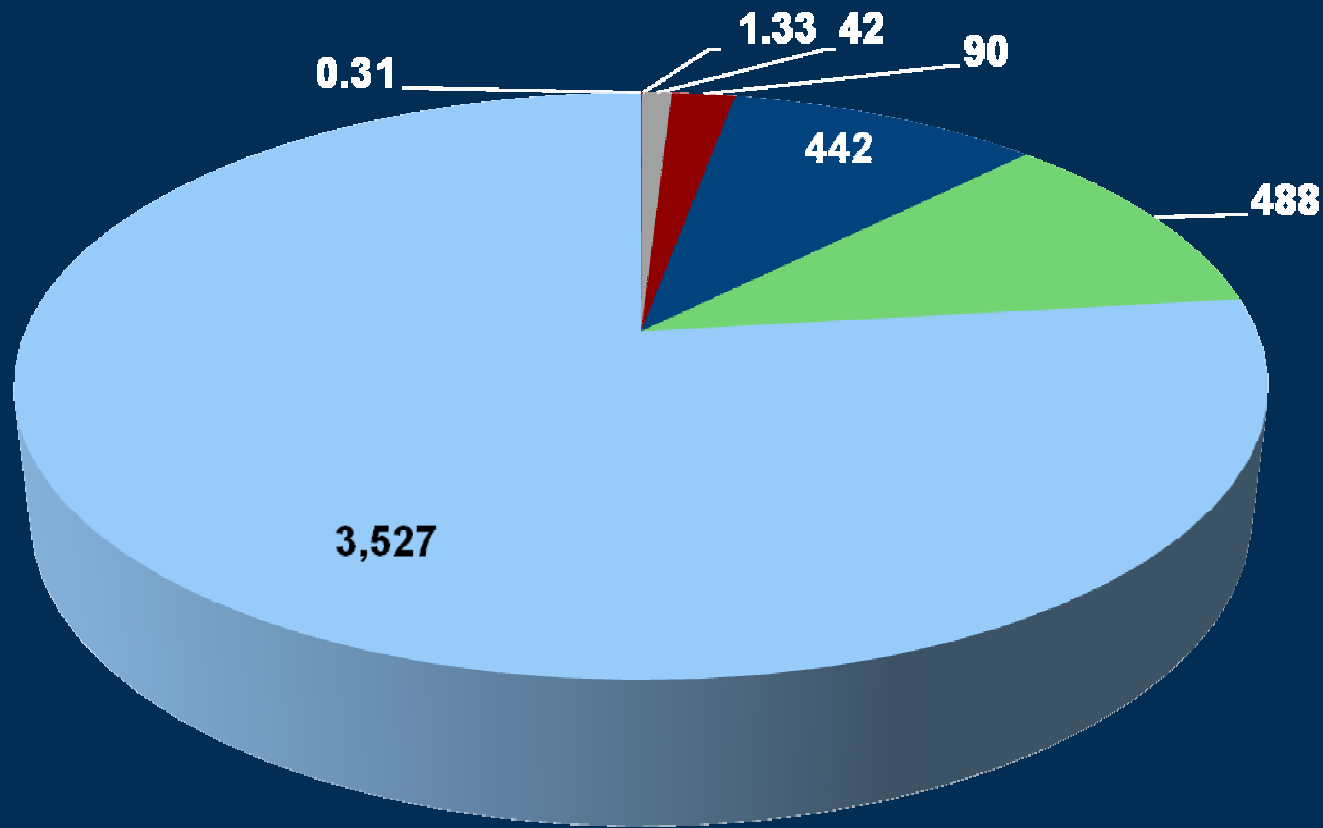
## 7. Results Developed to Date Submitted Transportation Projects by Type



- Intersection Improvement
- System Operations
- Park-and-Ride
- Bike/Pedestrian
- Capacity Expansion
- RR Grade Separation

## 7. Results Developed to Date

### Overall Reduction per Project by Type (tons)

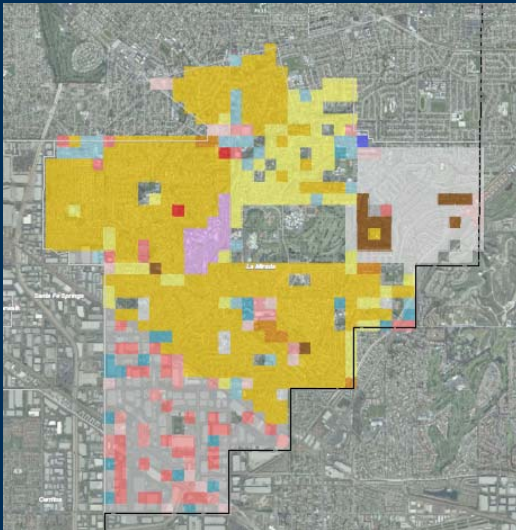


- Capacity Expansion
- Int Imp (New Capacity)
- Int Imp (New Phase)
- Int Imp (New Signal)
- Park-and-Ride
- RR Grade Separation
- System Operations

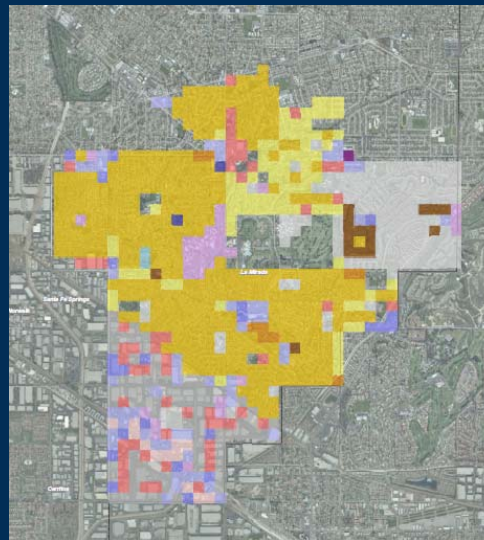
# 7. Results Developed to Date

## Preliminary Results City of La Mirada Default Scenarios

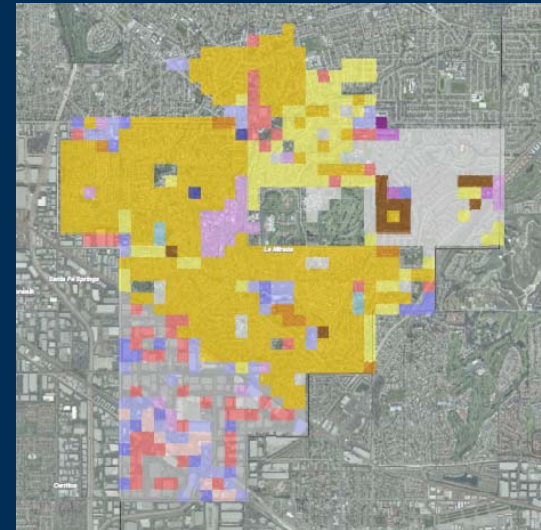
2008



2020



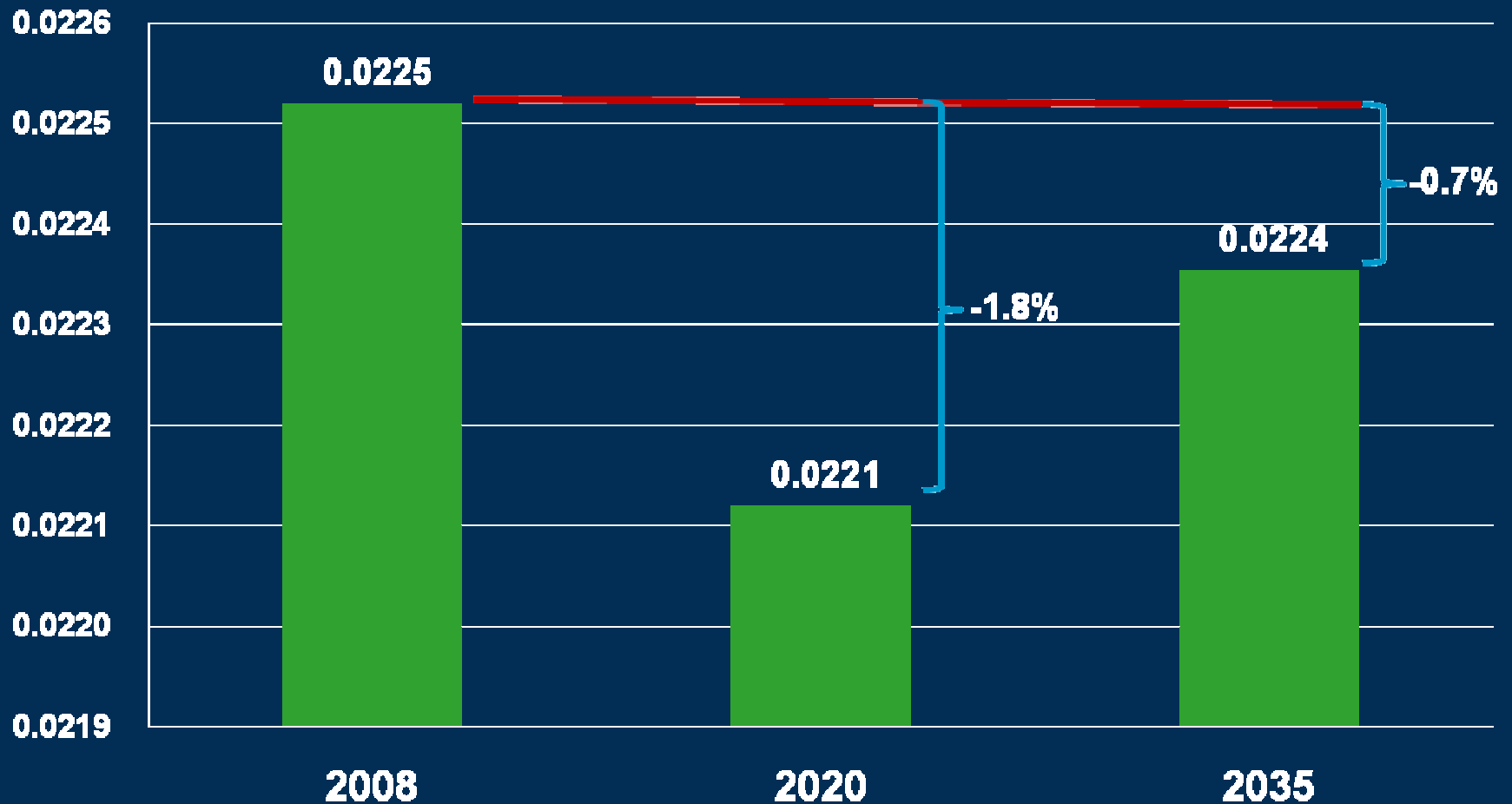
2035



# 7. Results Developed to Date

## GHG Emissions per Household for La Mirada

Tons per Household



## 7. Results Developed to Date

### Preliminary Results for Cerritos TDM Activities

- **Shuttles**
- **Bus pass program**
- **Transit marketing and street furniture**
- **Employee trip reduction program**
- **TDM ordinance**
  - **Preferential parking for vanpools**
  - **Bike racks**
  - **Carpool and vanpool loading areas**

## 7. Results Developed to Date

### Preliminary Results for Long Beach TDM Activities

- Employee bus pass program
- Safe routes to school
- Bike initiatives
  - Bike station
  - Bike safety and awareness
  - Bike friendly districts
- TDM ordinance
  - 25,000 sq. ft. non-residential and larger
  - Douglas Park TDM requirement for 20% pm peak reduction
  - 3.75 million sq ft office; GHG reductions could be significant

## 7. Next Steps

### Continuing Involvement in SCS Process

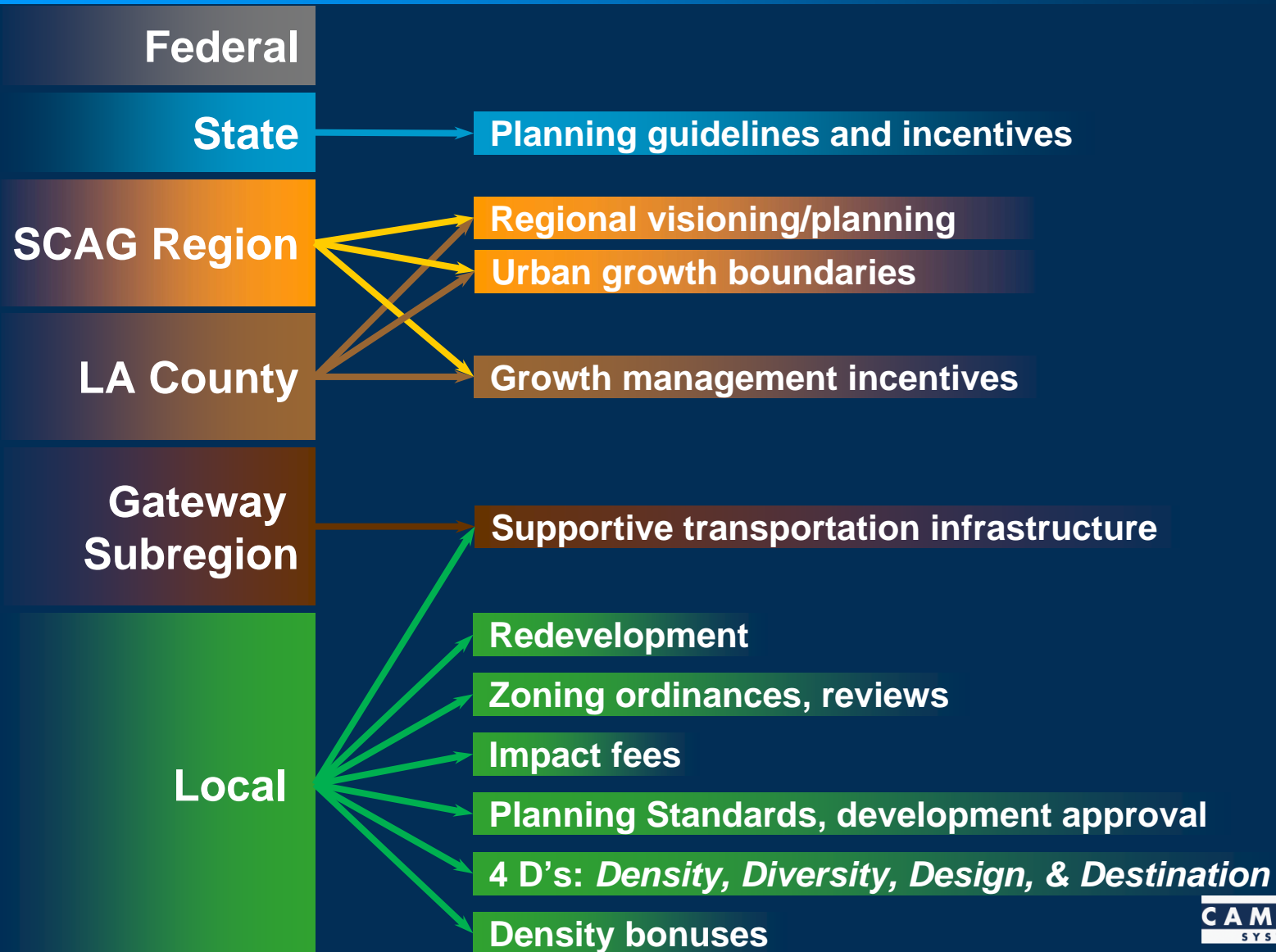
- Please offer any input/suggestions to COG staff
  - Nancy Pfeffer, Director of Regional Planning, [nancy@networkpa.net](mailto:nancy@networkpa.net)
- Public Workshops Scheduled
  - April 26 (Tues) – Cerritos
  - May 3 (Tues) – Long Beach
  - May 9 (Mon) – Pico Rivera
  - May 12 (Thurs) – Commerce
- COG Board Meetings first Wednesday of each month

# Questions & Answers

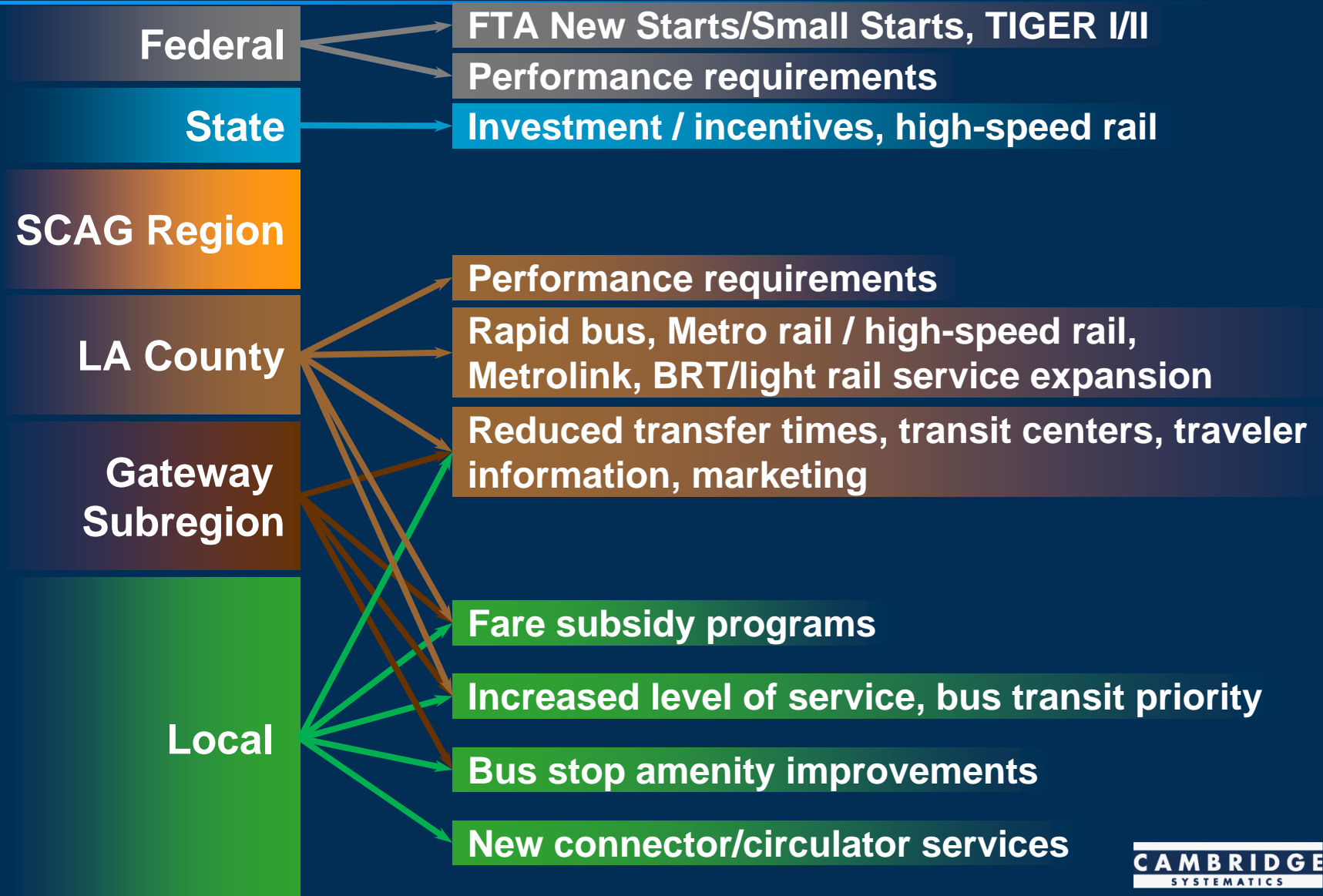
# Back-up Slides

# 5. Current Understanding of GHG Reduction Strategies

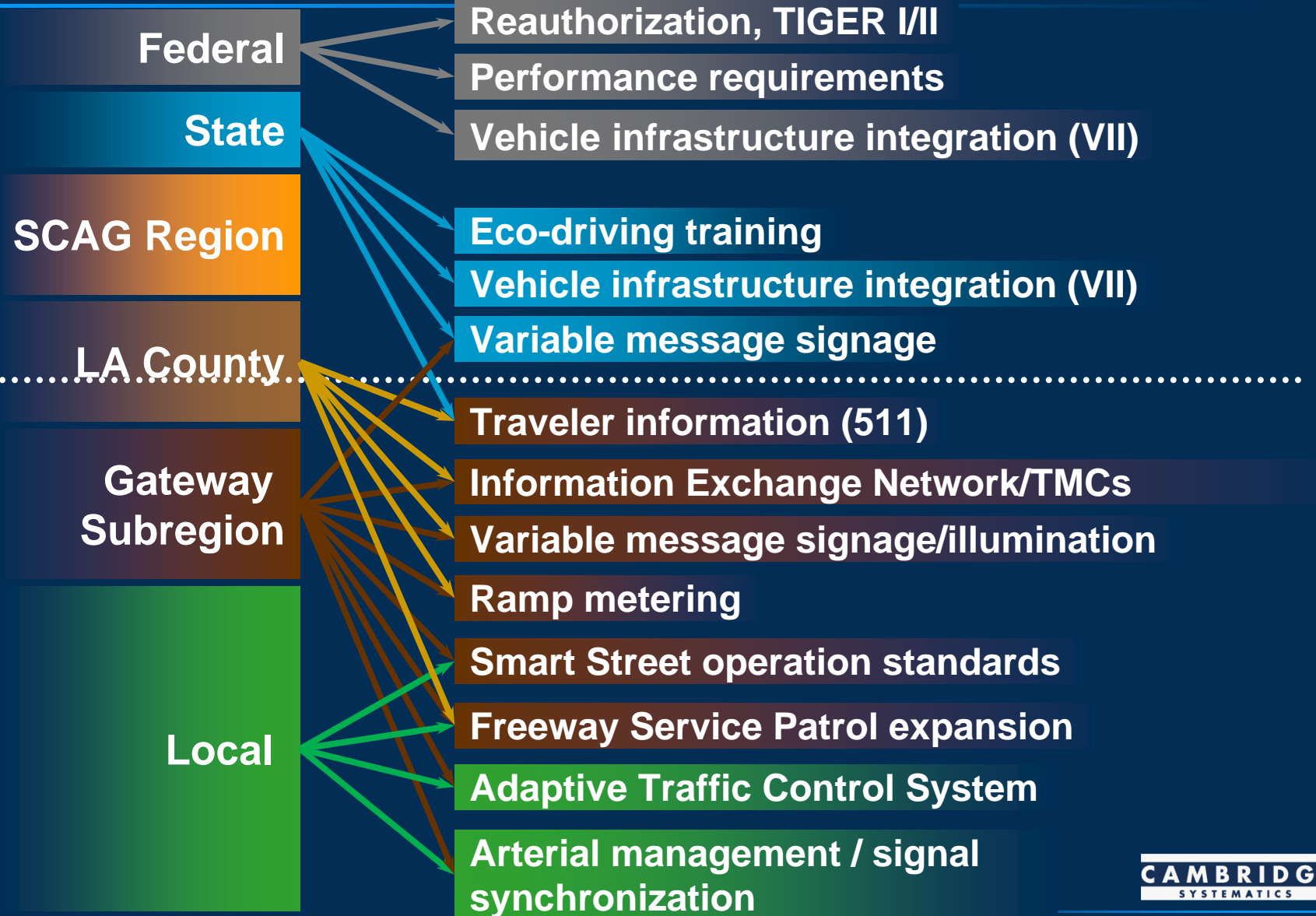
## *Land Use and Smart Growth*



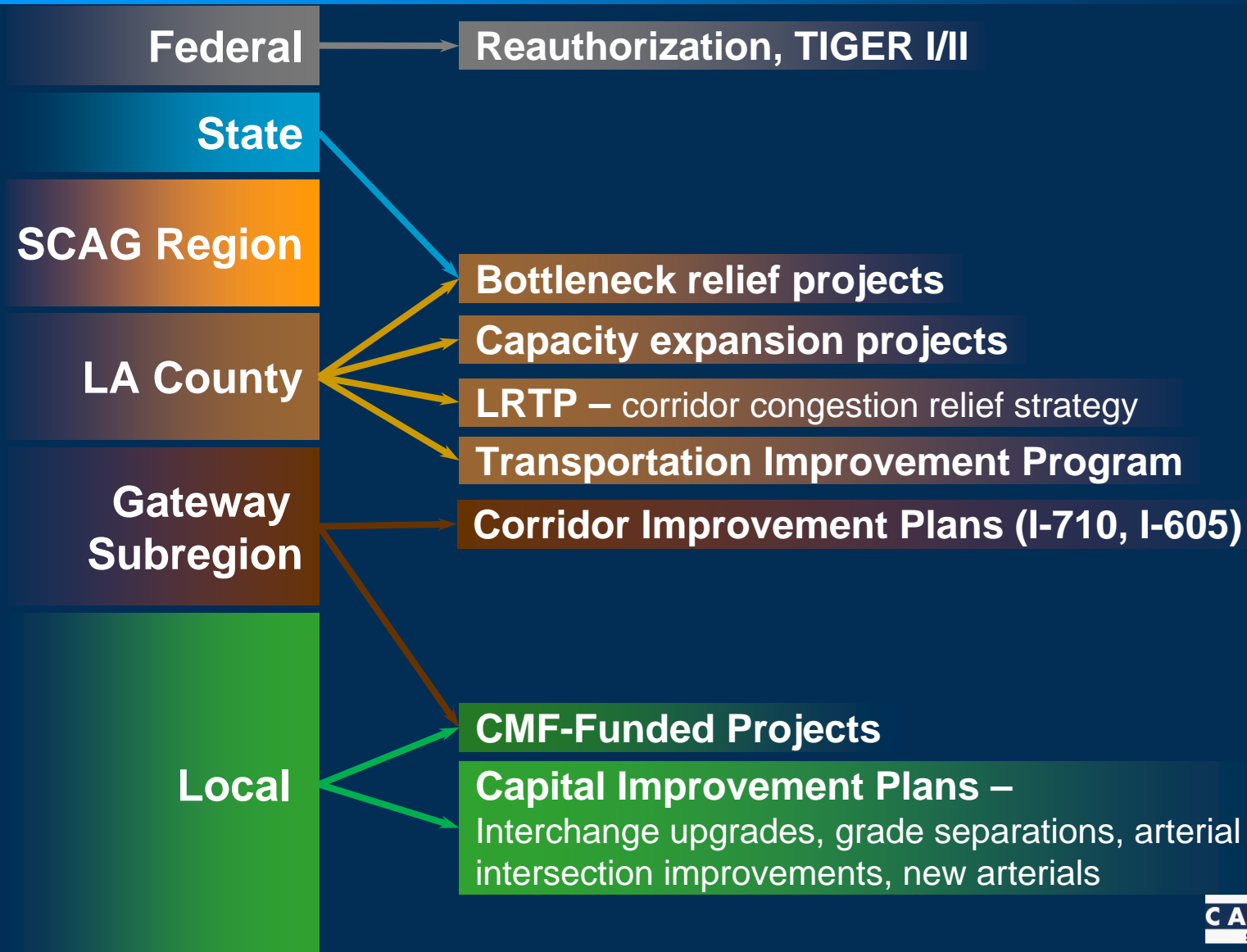
## 5. Current Understanding of GHG Reduction Strategies *Public Transportation Improvement*



# 5. Current Understanding of GHG Reduction Strategies *Traffic Ops / Management / ITS*



## 5. Current Understanding of GHG Reduction Strategies *System Capacity / Bottleneck Relief*



# 5. Current Understanding of GHG Reduction Strategies *Pricing*

