

The Gateway Cities
Air Quality Action Plan

Community Medical Needs Assessment Key Findings

Environmental Committee
September 28, 2011

This AQAP study is not part of the I-710 Corridor Project studies, but upon completion, it will be submitted to Caltrans for review and consideration for use in preparing the I-710 Corridor Project EIR/EIS.



GATEWAY CITIES
COUNCIL OF GOVERNMENTS

Made possible with support from



Metro

Protocol Development Process

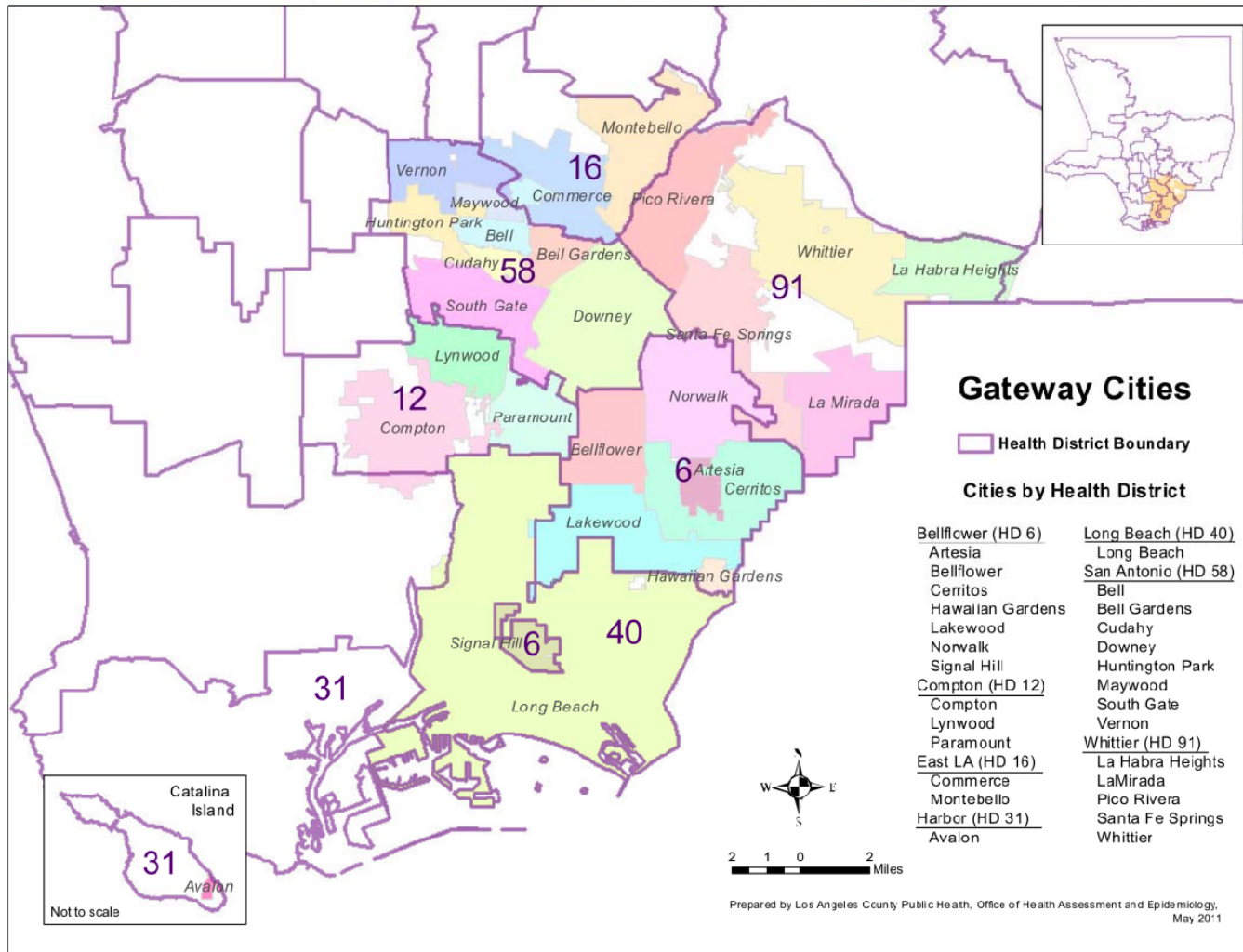
Characterizes Health Conditions/Treatment by reviewing data re:

- Disease outcomes
- Health resources available
- The effectiveness of existing medical care

Uses data from:

- Los Angeles County Department of Public Health (LACDPH):
 - Los Angeles County Health Survey (2007)
 - Mortality in Los Angeles County (2007)
- Office of Statewide Health Planning and Development (OSHPD):
 - Hospitalization and Emergency Department Visit Data (2009)
 - Shortage Designation Data (2010)
- California Health Interview Survey (CHIS) (2009)
- U.S. Census Bureau

Geographies: Health Districts



Health, Medical Need, & Quality of Life (I)

- Chronic and acute health problems have an impact on quality of life and long-term health. Struggling with poor health increases vulnerability to exposure to adverse environmental, social, economic, and political conditions and circumstances.
- Prevalence of diseases or negative health conditions is rarely distributed evenly amongst a population. Certain communities may have a higher risk for disease outcomes due to a variety of factors including income, housing adequacy, access to medical care, stable health insurance, nutrition, employment conditions, parenting resources, neighborhood environmental quality, and community violence and stress.
- Patterns of health and disease outcomes often reflect patterns of social and economic circumstances.

Health, Medical Need, & Quality of Life (II)

- For individuals, income is one of the strongest and most consistent predictors of health and disease in the public health research literature.
- Individuals who live in poor, disadvantaged neighborhoods have inferior health outcomes.
- Research has found that access to primary care can partially mitigate the negative effects of lower socio-economic status (SES) and income inequality on health.
- Access to health services including preventive care, primary care, and tertiary care often depends on whether a person has health insurance.

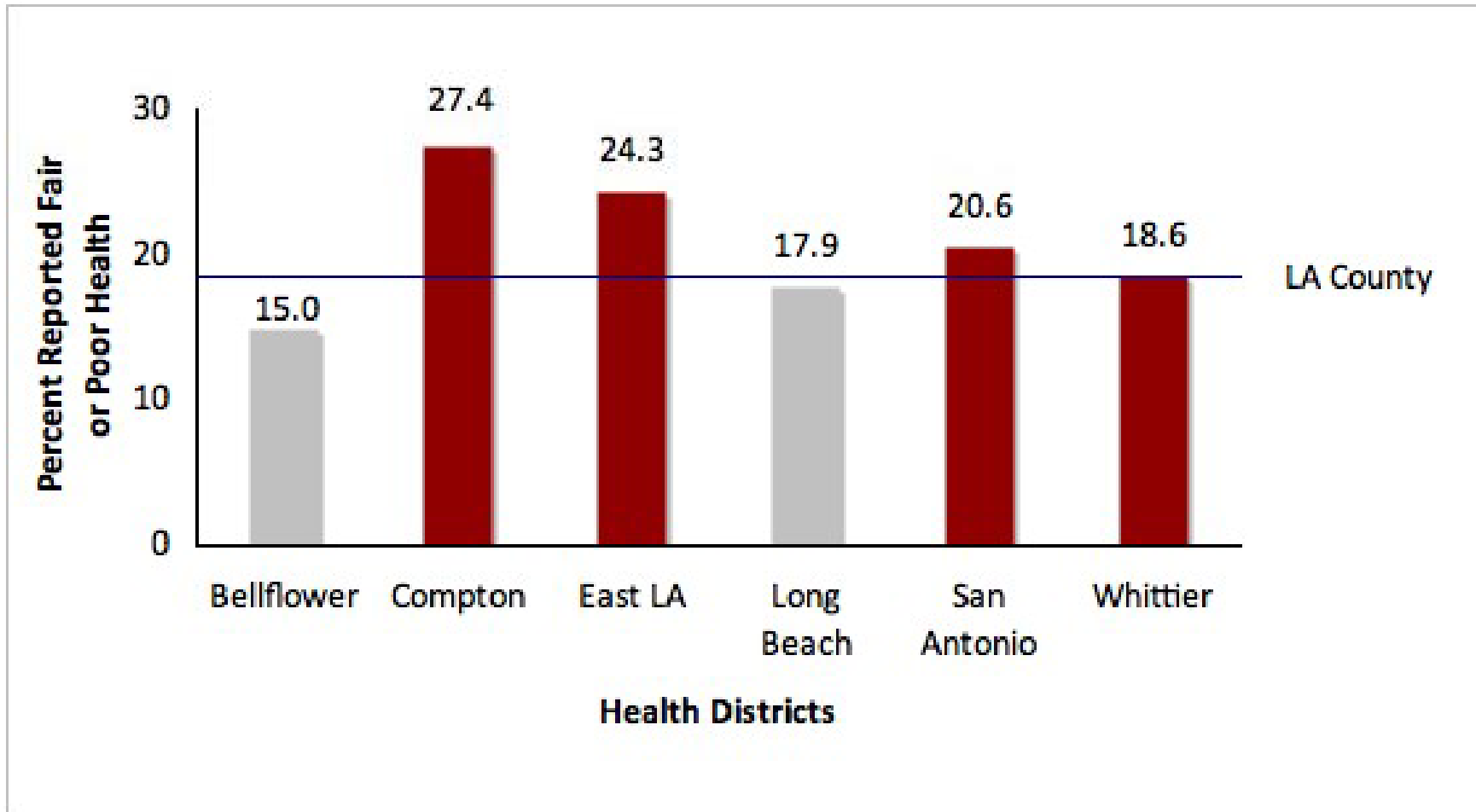
Demographic Characteristics

- 12 of the 26 Gateway Cities have a higher percentage of individuals living below the poverty level than in Los Angeles County overall.
- ½ of the Gateway Cities are considered to have higher percentages of severe overcrowding (1.51 or more occupants per room) than are found in the county overall. More than 17% of housing units in Huntington Park are considered to be severely overcrowded, the highest percentage in the study area.

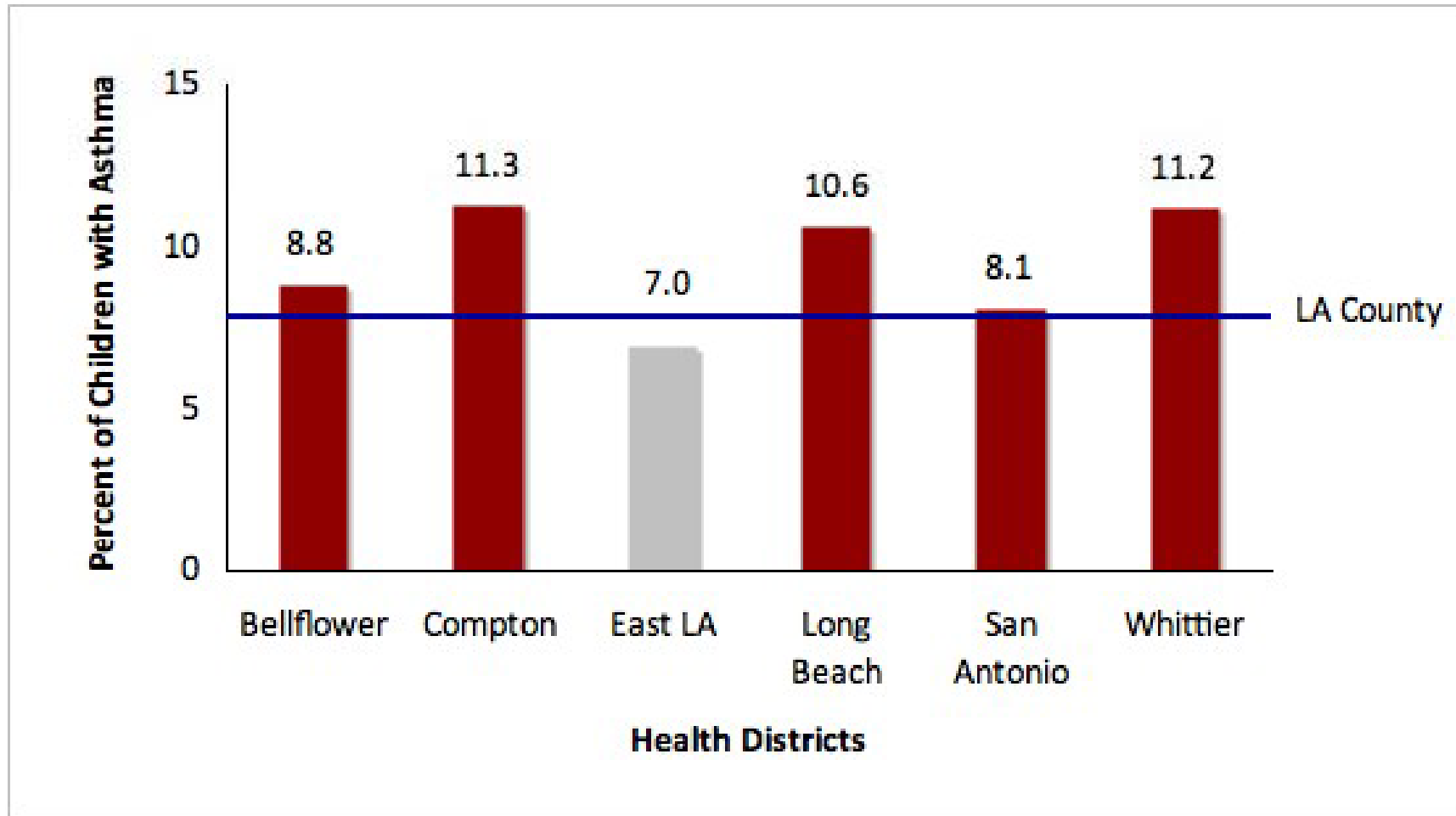
Examples of Findings in the CMNA

- Self-reported health status
- Prevalence of children with asthma
- Asthma hospitalization rates
- Cardiovascular disease emergency department visit rates
- Heart attack hospitalization rates
- Adults who meet physical activity guidelines
- Depression-related hospitalization rates
- Leading causes of death
- Primary care health professional shortage areas
- Mental health professional shortage areas
- Medically underserved populations

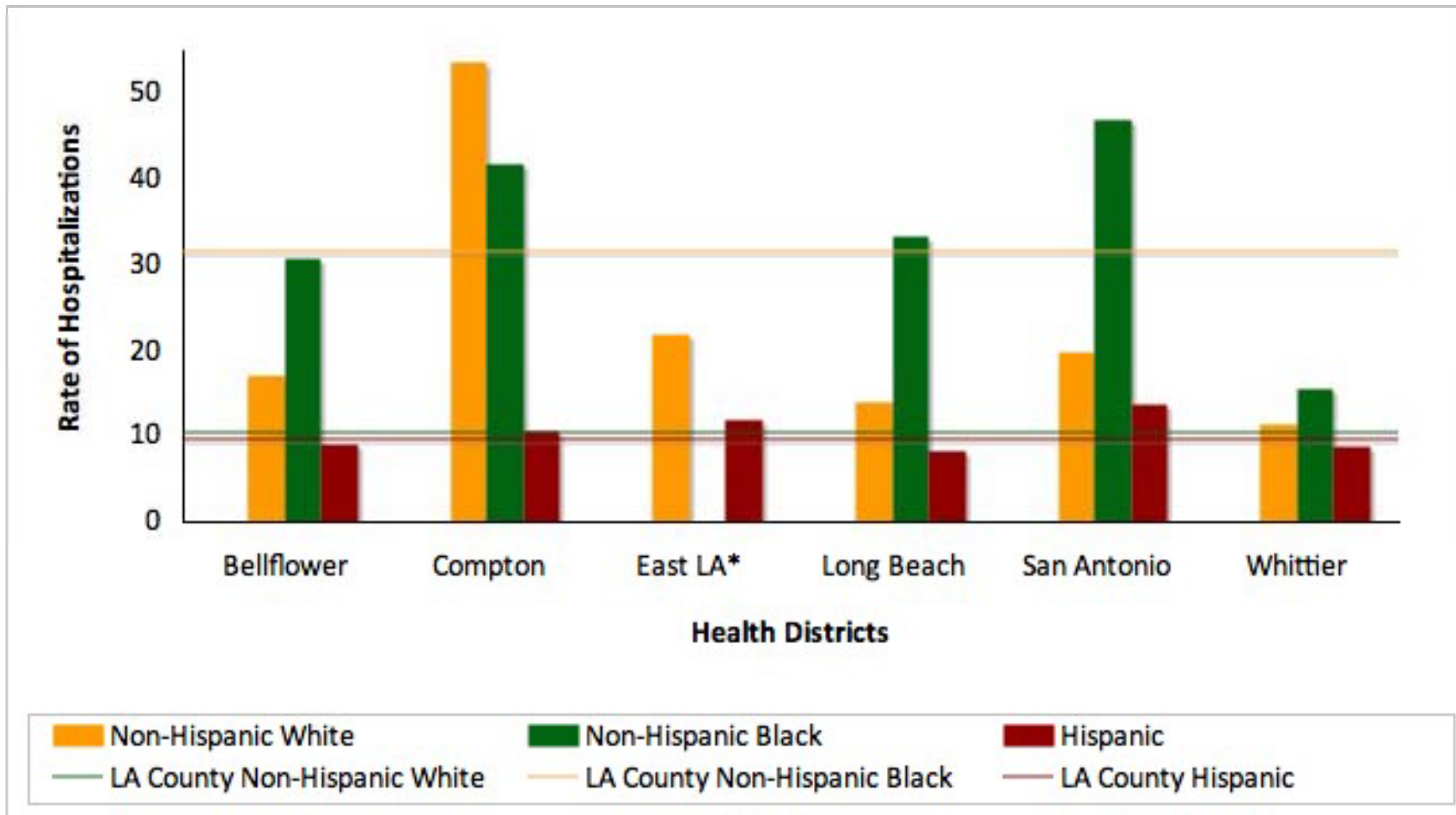
Self-reported Health Status



Prevalence of Children with Asthma

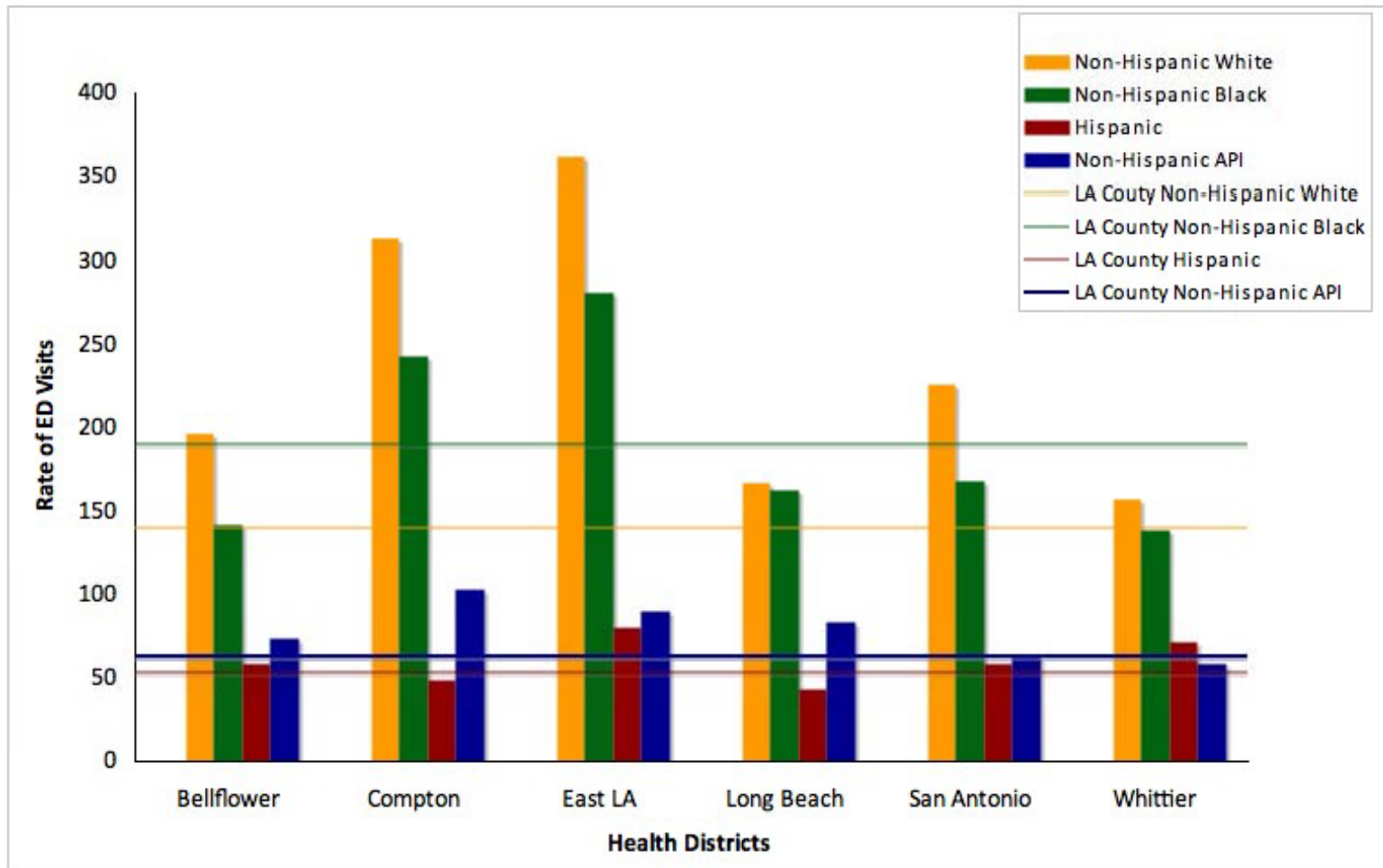


Asthma Hospitalization Rates



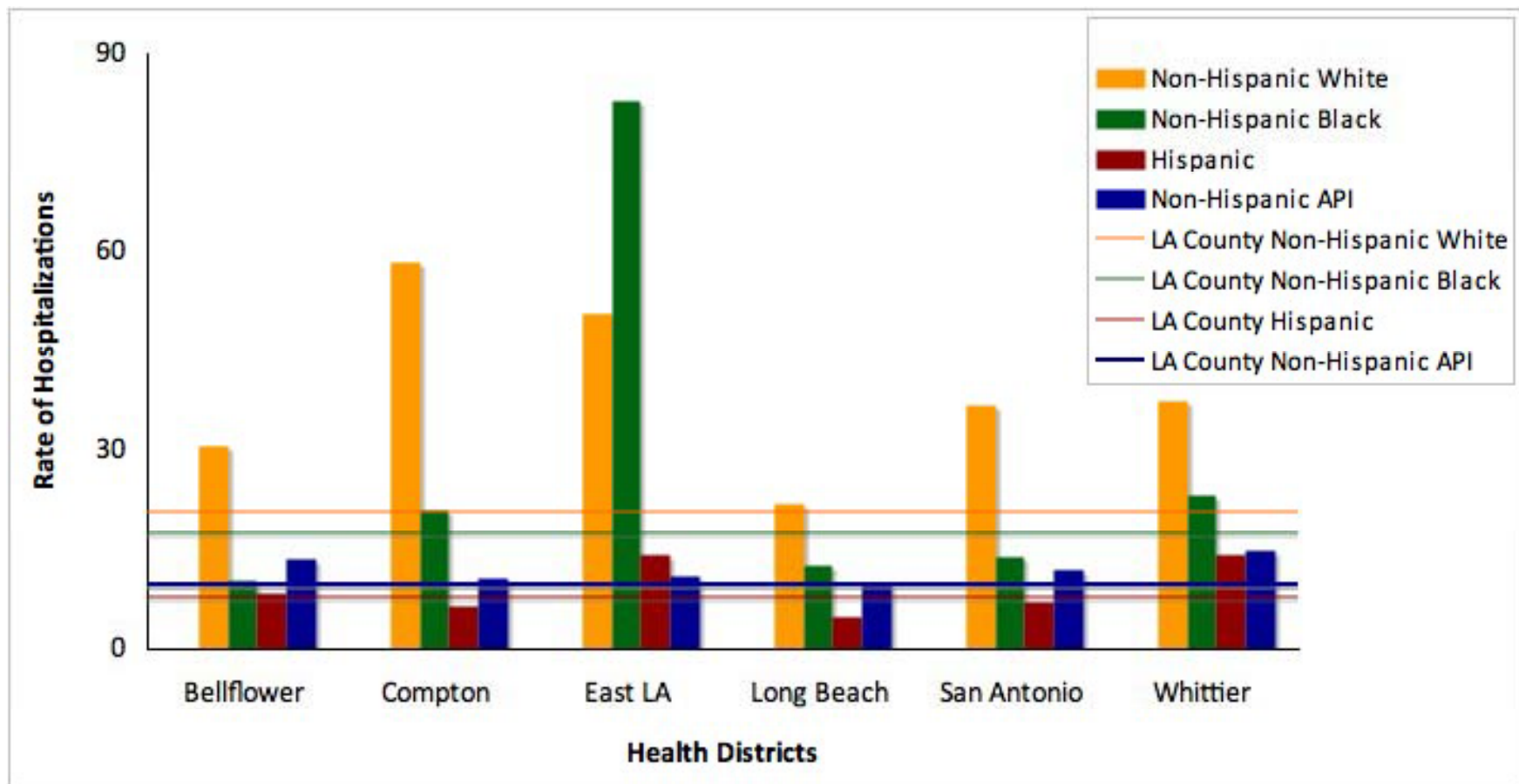
Source: Office of Statewide Health Planning and Development (OSHPD), 2009

Cardiovascular Disease Emergency Department Visit Rates

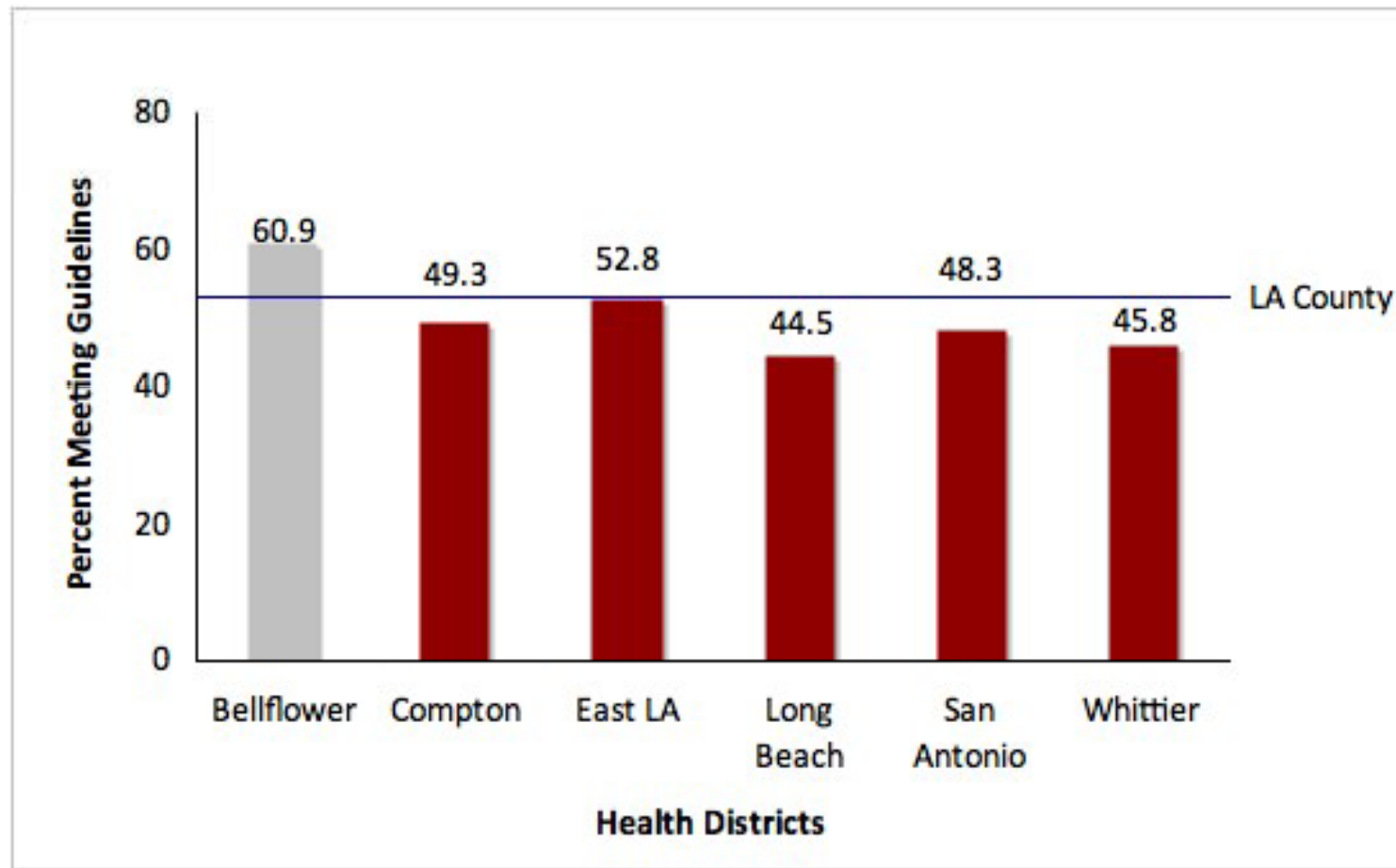


Source: Office of Statewide Health Planning and Development (OSHPD), 2009

Heart Attack Hospitalization Rates

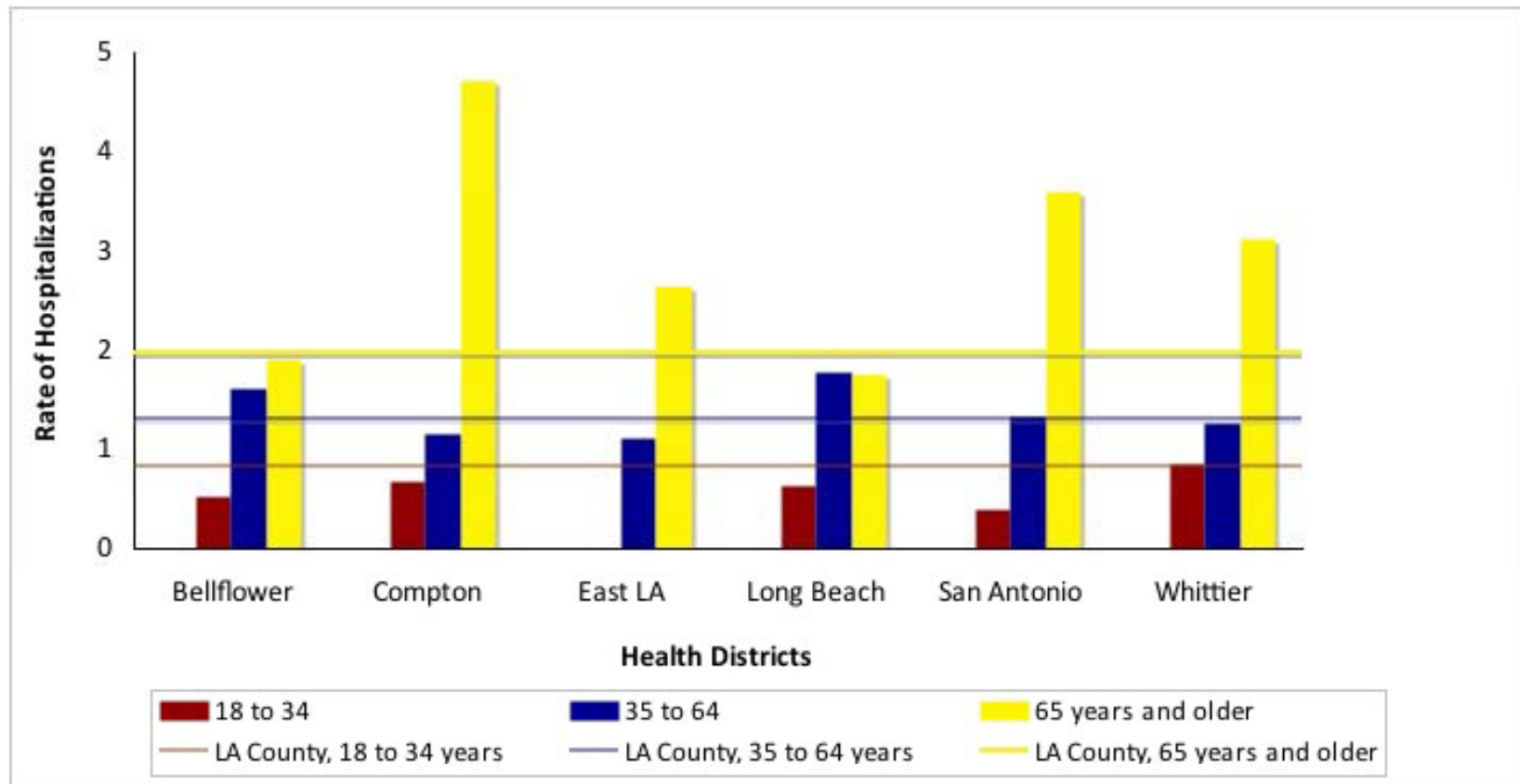


Percent of Adults who Meet Physical Activity Guidelines



Source: 2007 Los Angeles County Health Survey

Rates of Hospitalizations Related to Depression

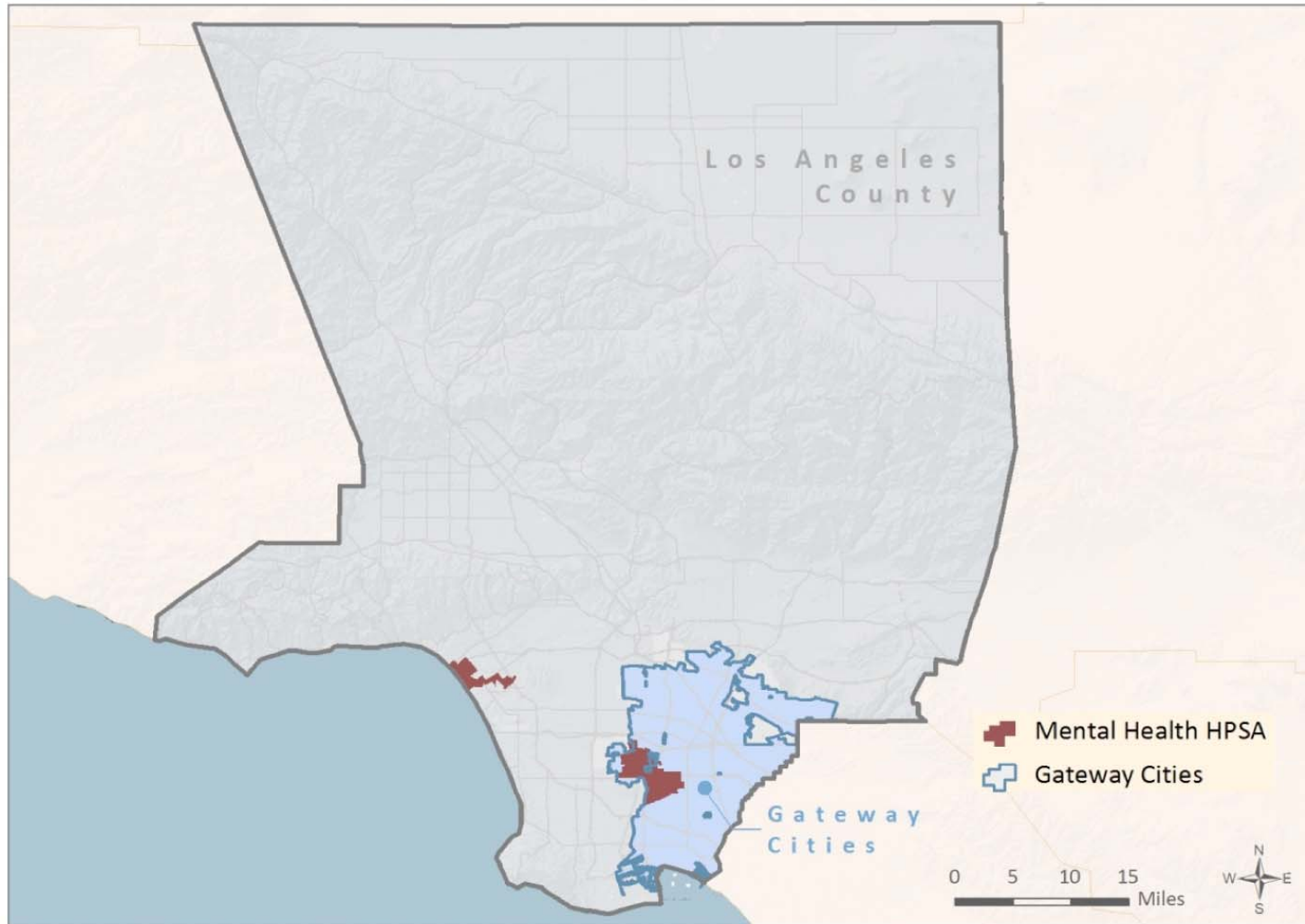


Leading Causes of Death

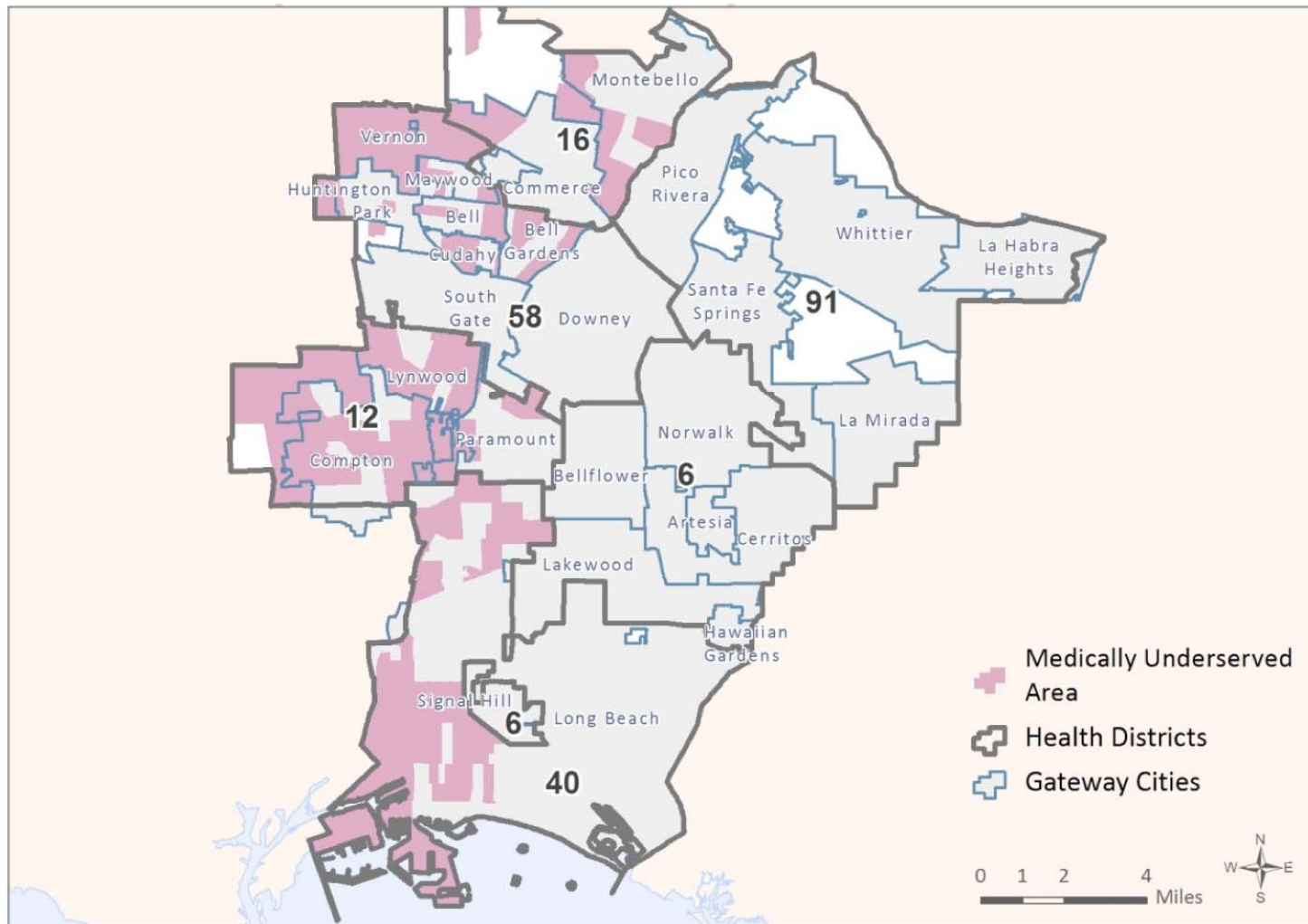
	LA County	Bellflower (HD 6)	Compton (HD 12)	East LA (HD 16)	Long Beach (HD 40)	San Antonio (HD 58)	Whittier (HD 91)
#1 cause of deaths	Coronary Heart Disease	Coronary Heart Disease	Coronary Heart Disease	Coronary Heart Disease	Coronary Heart Disease	Coronary Heart Disease	Coronary Heart Disease
#2 cause of deaths	Stroke	Emphysema / COPD	Stroke	Stroke	Emphysema / COPD	Stroke	Stroke
#3 cause of deaths	Lung Cancer	Stroke	Lung Cancer	Diabetes	Lung Cancer	Diabetes	Lung Cancer
#4 cause of deaths	Emphysema / COPD	Lung Cancer	Homicide	Liver Disease	Stroke	Emphysema / COPD	Emphysema / COPD
#5 cause of deaths	Pneumonia/ influenza	Diabetes	Diabetes	Lung Cancer	Pneumonia/ influenza	Lung Cancer	Diabetes

Source: Mortality in Los Angeles County 2007, Los Angeles County Department of Public Health.

Mental Health Professional Shortage Areas



Medically Underserved Areas



Recommendations

- Convene a Health Working Group
 - Goals: understand and address some specific conditions that contribute to poor health and lack of access to medical care on west side of Gateway Cities
 - Participants: public agencies, researchers, community members, health organizations, decision makers
 - Develop a policy and program agenda: health insurance, attracting doctors to areas in need, addressing root causes of chronic disease, addressing health disparities
- Routinely update and monitor data collected in the CMNA
- Address ideas to increase medical health facilities on the west side of Gateway Cities

Conclusions

- Overall, Gateway Cities residents have slightly higher incidence of health issues compared to the rest of the county, but it is not significant.
- Non-Hispanic white and black residents have higher incidence of health problems associated with asthma and heart conditions than Hispanic residents
- Primary care facilities appear to be generally adequate except for the areas bordering the west side of Gateway Cities.
- The medically underserved areas in Gateway cities also border the west side of the region.